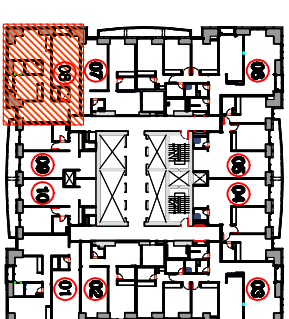
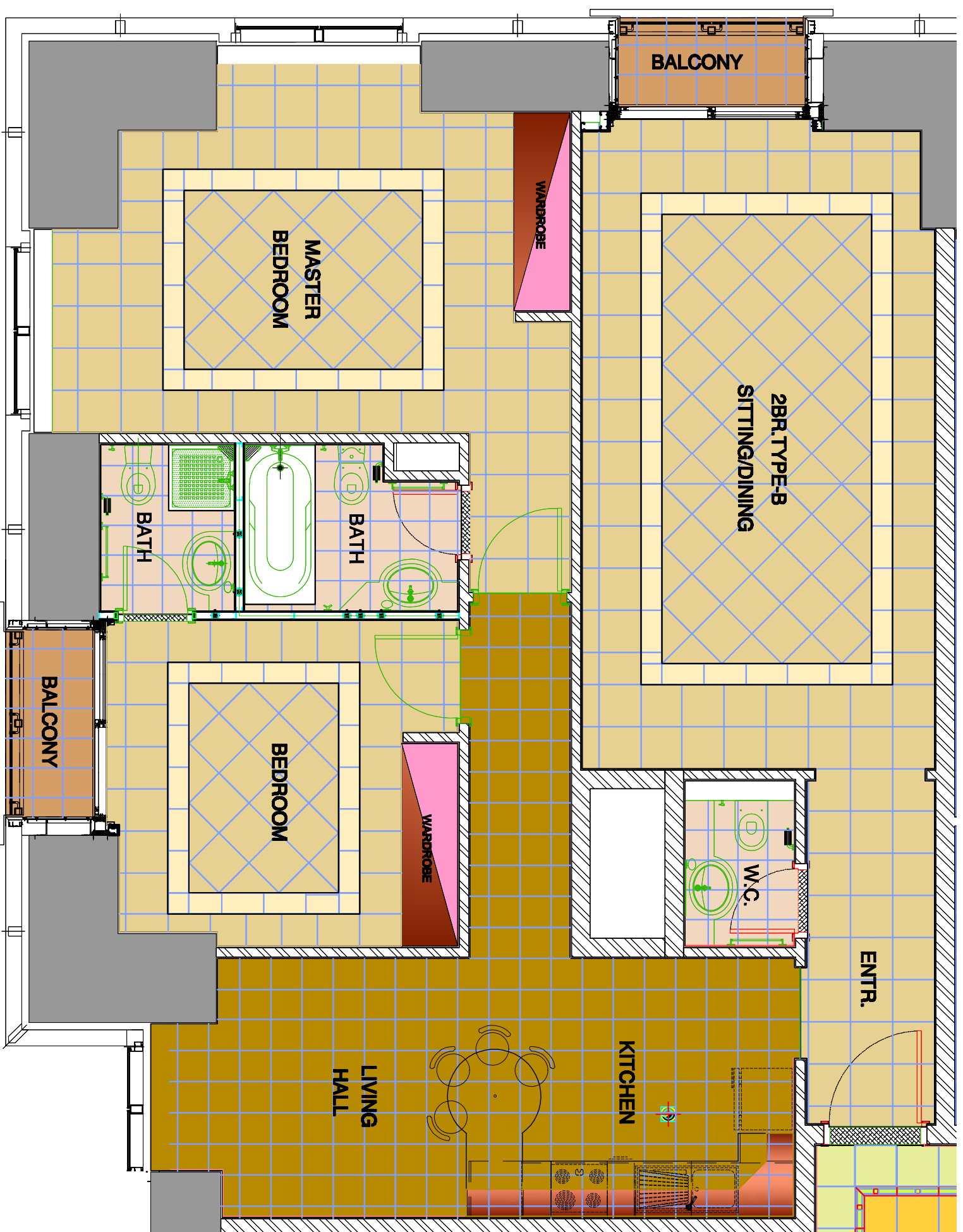


KEY PLAN



ALL PLANS AND ILLUSTRATIONS CONTAINED IN THIS PUBLICATION ARE THE EXCLUSIVE PROPERTY OF TAMER HOLDING INVESTMENTS ("TAMER") AND REPRODUCTION, REVISION OR MODIFICATION IN WHOLE OR PART IS STRICTLY PROHIBITED. TAMER GIVES NOTICE THAT THE FLOOR PLANS PROVIDED ARE PRODUCED IN GOOD FAITH AND ARE SET OUT AS A GENERAL GUIDE ONLY AND DO NOT CONSTITUTE ANY PART OF AN OFFER OR CONTRACT. THE FLOOR PLANS ARE BELIEVED TO BE CORRECT AT THE TIME OF PUBLICATION, HOWEVER THERE MAY BE AT THE CHANGED AT ANY TIME WITHOUT PRIOR NOTICE AT THE SOLE DISCRETION OF TAMER AND SHOULD YOU BE PART ACTUAL USABLE FLOOR SPACE MAY VARY FROM THE STATED FLOOR PLAN.

COLOURED SHOWN ARE ILLUSTRATIVE ONLY, DO NOT REPRESENT THE FINISH PRODUCT



APARTMENT NO : 8
LEVELS 7th~70th

DRAWING TITLE:
1ST TYPICAL LAYOUT
APARTMENT NO : 8
(2 BR. TYPE-B)



PROJECT
PRINCESS TOWER
(6B + G + 100) (107FLOORS)
PLOT No. ASD 382-182, AL SOFOUH ROAD, DUBAI MARINA

OWNER :