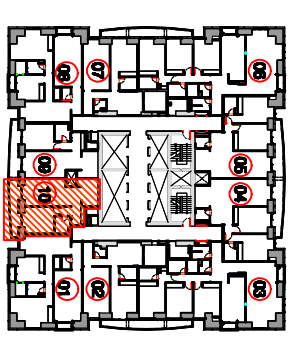


APARTMENT NO : 10 LEVELS 7th~70th



KEY PLAN

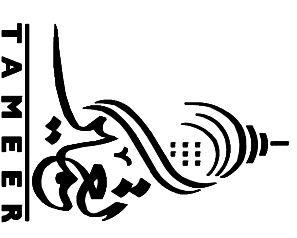


ALL PLANS AND ILLUSTRATIONS CONTAINED IN THIS PUBLICATION ARE THE EXCLUSIVE PROPERTY OF TAMEER HOLDING INVESTMENTS ("TAMEER") AND REPRODUCTION, REVISION OR MODIFICATION IN WHOLE OR PART IS STRICTLY PROHIBITED. TAMEER GIVES NOTICE THAT THE FLOOR PLANS PROVIDED ARE PRODUCED IN GOOD FAITH AND ARE SET OUT AS A GENERAL GUIDE ONLY AND DO NOT CONSTITUTE ANY PART OF AN OFFER OR CONTRACT. THE FLOOR PLANS ARE BELIEVED TO BE CORRECT AT THE TIME OF PREPARATION BUT SHOULD NOT BE RELIED UPON AT ANY TIME WITHOUT PRIOR NOTICE AT THE SOLE DISCRETION OF TAMEER AND SHOULD NOT BE CONSTRUED AS A BINDING COMMITMENT ON TAMEER'S PART. ACTUAL USABLE FLOOR SPACE MAY VARY FROM THE STATED FLOOR PLAN.

COLOURED SHOWN ARE ILLUSTRATIVE ONLY DO NOT REPRESENT THE FINISH PRODUCT

PROJECT
PRINCESS TOWER
(6B + G + 100) (107FLOORS)
PLOT No. ASD 382-182, AL SOFOUH ROAD, DUBAI MARINA

OWNER :



DRAWING TITLE:
**1ST TYPICAL LAYOUT
APARTMENT NO : 10
(1 BR. TYPE-B)**