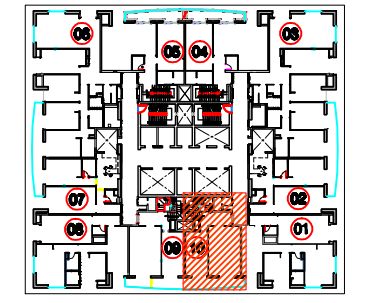


**APARTMENT NO : 10
LEVELS 71,73,75,77
DUPLEX(LOWER LEVEL)**

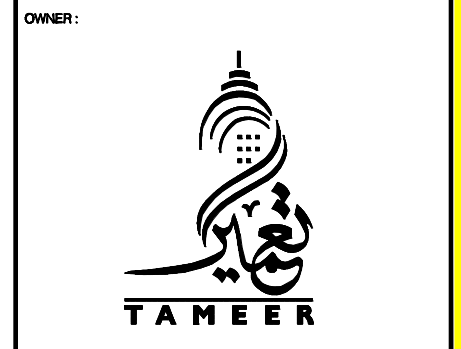
KEY PLAN



ALL PLANS AND ILLUSTRATIONS CONTAINED IN THIS PUBLICATION ARE THE EXCLUSIVE PROPERTY OF TAMEER HOLDING INVESTMENTS ("TAMEER") AND REPRODUCTION, REVISION OR MODIFICATION IN WHOLE OR PART IS STRICTLY PROHIBITED. TAMEER GIVES NOTICE THAT THE FLOOR PLANS PROVIDED ARE PRODUCED IN GOOD FAITH AND ARE SET OUT AS A GENERAL GUIDE ONLY AND DO NOT CONSTITUTE ANY PART OF AN OFFER OR CONTRACT. THE FLOOR PLANS ARE BELIEVED TO BE CORRECT AT THE TIME OF PUBLICATION, HOWEVER THESE MAY BE CHANGED AT ANY TIME WITHOUT PRIOR NOTICE AT THE SOLE DISCRETION OF TAMEER AND SHOULD NOT BE CONSTRUED AS A BINDING COMMITMENT ON TAMEER'S PART. ACTUAL USEABLE FLOOR SPACE MAY VARY FROM THE STATED FLOOR PLAN.

COLOURED SHOWN ARE ILLUSTRATIVE ONLY DO NOT REPRESENT THE FINISH PRODUCT

PROJECT
PRINCESS TOWER
(6B + G + 100) (107FLOORS)
PLOT No. ASD 382-192, AL SOFUH ROAD, DUBAI MARINA



DRAWING TITLE:
**2ND TYPICAL LAYOUT
APARTMENT NO : 10
(2 BR. TYPE-C)**

